

THERMOLEC

Specification Sheet - For Model NER Packaged Electric Make-Up Air Heater Without Fan



Standard Features:

- Sized for up to 2500 CFM
- Modulating (SCR) Temperature Control
- Low and high temperature limit protection
- Current sensing relay to start fan
- Aluminum mesh permanent washable filter
- Dry contact for remote fan operation
- Fan by others
- Maximum 0.15" wc pressure drop through cabinet
- Integrated backdraft damper
- Listed for zero clearance
- Supply air temperature sensor
- Listed for horizontal installation
- Auto and manual reset high limits
- 10-year open coil element warranty
- 2-year parts warranty
- Made in North America

Specifications

*Model	Kw	BTU/H	CFM @ .25SP	Temp. † Rise °F	Amps	Volts	Phase	Circuit Breaker	Duct Collar	Shipping Weight
NER-10-10-240/1	10.0	34,120	680	50	41.7	240	1-50/60	60amp	10"	70
NER-10-15-240/1	15.0	51,180	680	73	62.5	240	1-50/60	2 x 40amp	10"	70
NER-12-15-240/1	15.0	51,180	932	55	62.5	240	1-50/60	2 x 40amp	12"	110
NER-12-20-240/1	20.0	68,240	932	68	83.4	240	1-50/60	2 x 60amp	12"	110
NER-14-25-240/1	25.0	85,300	1200	71	104.2	240	1-50/60	3 x 50amp	14"	110
NER-14-34-240/1	34.0	116,008	1620	72	141.8	240	1-50/60	3 x 60amp	14"	110
NER-10-15-208/3	15.0	51,180	680	73	41.7	208	3-50/60	60amp	10"	70
NER-12-20-208/1	20.0	68,240	932	68	96.2	208	1-50/60	2 x 60amp	12"	110
NER-14-25-208/1	25.0	85,300	1200	71	122	208	1-50/60	3 x 60amp	14"	110
NER-14-34-480/3	34.0	116,008	1620	72	40.8	480	3-50/60	N/A	14"	110

Specifications subject to change without notice.

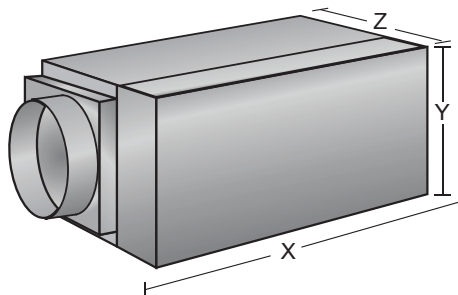
*Custom sizes available in all voltages.

† Based on .25 SP

When ordering please specify the collar size, kW and voltage/phase as in the following example.

NER-12-20-240/1

Collar size (inches) 10" 12" 14" Voltage Kw



Distributed by:

EP SALES INC.
7878 12TH AVENUE S.
BLOOMINGTON MN USA
55425 (952) 854 - 4400
sales@epsalesinc.com

AVAILABLE SIZES:

Collar Size	10"	12"	14"
Max Voltage	600	600	600
Max Kw	10 Kw	20 Kw	34 Kw
Dimensions (X x Y x Z)	35 1/2" x 15" x 15 1/4"	43 1/2 x 16" x 21"	43 1/2 x 16" x 21"

Note: Sizes are approximate and may change without notice.

THERMOLEC

2060 Lucien-Thimens,
Montreal, Quebec, Canada H4R 1L1
Tel: 514-336-9130 Fax: 514-336-3270
www.thermolec.com



TD-MIXVENT

Inline Mixed Flow Fans



Models TD-200 & 315

Performance characteristics

Models 250 and 315 include a direct two speed motor connection.

Model	Nom. RPM	Volts	Max. Watts	Speed	CFM v Static Pressure (SP) Ins. WG							Max. SP	Max operating temp. (°F)	Wgt. (lbs)	Duct Dia. Ins.
					0"	0.125"	0.25"	0.375"	0.5"	0.75"	1.0"				
TD-250	2400	115	162	LS	541	475	418	355	295	218	170	2.03	140	19.8	10"
	3200	115	241	HS	754	715	680	640	606	520	405	2.53	140	19.8	10"
TD-315	2000	115	208	LS	751	670	545	420	285	190	130	1.62	140	30.9	12.4"
	2500	115	335	HS	1050	990	932	850	770	600	420	2.95	140	30.9	12.4"
TD-355	1536	115	522	-	2090	2013	1935	1856	1777	1616	1326	1.1	140	43	14"
TD-400	1559	115	916	-	3127	3034	2938	2836	2735	2542	2303	1.2	140	78	16"

Performance certified is for installation Type D: Ducted Inlet, Ducted Outlet. Performance ratings do not include the effects of appurtenances.

LS= Low Speed
HS = High Speed



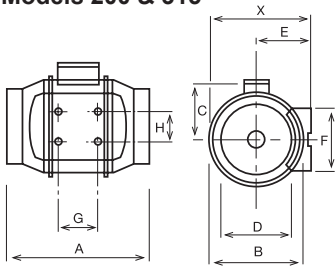
S&P USA certifies that all TD fan sizes shown herein are licensed to bear the AMCA Seal. The ratings shown are based on tests and procedures performed in accordance with AMCA Publication 211 and comply with the requirements of the AMCA Certified Ratings Program.



TD 250 & 315 are UL listed for outdoor use.

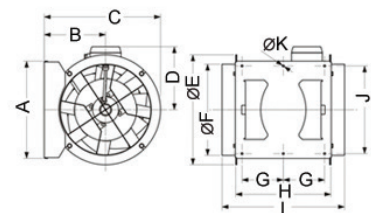
Dimensions (inches/mm)

Models 200 & 315



Model	X	A	B	C	D	E	F	G	H
TD-250	11 7/16 291	15 3/16 386	10 11/16 272	7 9/16 192	9 3/4 248	6 1/8 155	6 5/8 168	5 11/16 145	5 1/2 140
TD-315	14 356	17 11/16 450	13 1/4 336	8 13/16 224	12 5/16 312	7 3/8 188	8 1/4 210	7 3/16 182	7 178

Model 355



Model	A	B	C	D	E	F	G	H	I	J	K
TD-355	14 5/8 377	9 3/8 238	17 11/16 451	8 5/8 224	16 7/8 426	13 15/16 354	5 8/9 150	14 1/2 368	18 2/3 474	13 3/8 340	1/3 8.5
TD-400	16 407	9 4/5 249	19 3/8 492	10 1/2 267	19 1/6 487	15 5/7 399	6 2/7 160	16 3/4 425	21 5/9 547	14 4/7 370	1/3 8.5