

# Vent-A-Hood®

## DUCTWORK INSTALLATION DO'S & DON'TS

Vent-A-Hood range hoods must be properly specified and installed to be effective, which is also true of all manufacturers' exhaust systems.

If a Vent-A-Hood is properly specified, poor performance is almost always an indicator of improper installation/use.

If your hood isn't working properly, review these common installation pitfalls, and opportunities for improvement.

Consult your local building code to understand the requirements/limitations for your installation.

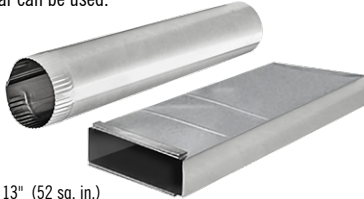
### DO



Use smooth galvanized ductwork, round ductwork is best but rectangular can be used.

300 CFM B100 & 250 CFM K250  
Round 6" (28.25 sq. in.)  
Rectangular 3-1/4" x 10" (32.5 sq. in.)

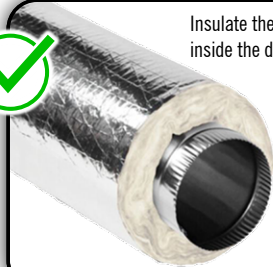
600 CFM B200  
Round 8" (50.25 sq. in.)  
Rectangular 6" x 8-1/2" (51 sq. in.) or 4" x 13" (52 sq. in.)



Make the duct run as simple as possible with gradual turns, using adjustable elbows.



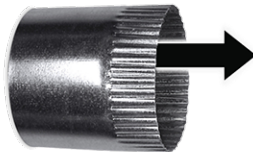
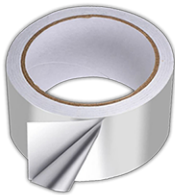
Insulate the entire duct run to prevent excessive condensation inside the ductwork.



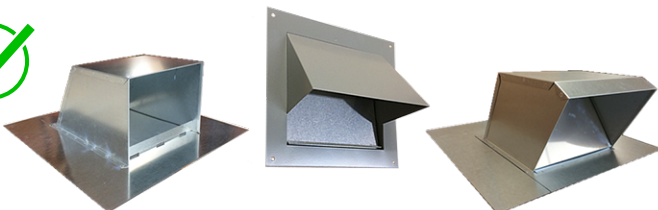
Install ductwork inside the hood's duct collar to contain any condensation that may occur.



Tape all joints with aluminum HVAC tape.



Air should move in the same direction as crimped ends for ideal performance.



Use unrestrictive wall caps and roof jacks to allow air to flow continuously and freely. Vent-A-Hood dealers have access to the appropriate wall caps and roof jacks.

### DON'T



Don't use flexible ductwork.



Don't reduce the correct duct size ANYWHERE in the duct run, even at the wall cap or roof jack.



5" duct in place of 6" reduces airflow by 32% (300 CFM to 204 CFM).

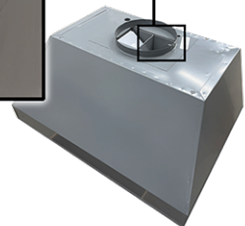
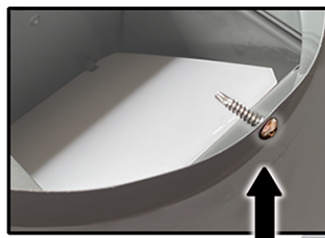
7" duct in place of 8" reduces airflow by 33% (600 CFM to 402 CFM).



Don't turn sharp corners, rapidly moving air cannot make sharp turns.



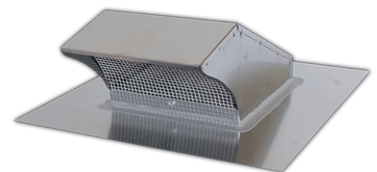
Don't use screws longer than 3/8". Screws may prevent the backdraft dampers from opening properly.



Ensure all backdraft dampers open and close completely and freely!



Don't restrict airflow at the exit of the home with a dead end or screen. Screens reduce airflow by 20-50%.



It is important to replace air removed from an interior space via a safe pathway from the outside. If this is not done, the possibility exists that fireplaces, water heaters, furnace flues etc. may be backdrafted. To avoid these potential problems, consult an HVAC professional who is qualified to determine if make-up air is needed.



# Vent-A-Hood®

## Installation Checklist

Shady Oak Distributing  
616 13th Ave S  
Hopkins, MN 55343  
P: 952.935.3305  
shadyoakdist.com

## ATTENTION INSTALLER

You are bound by warranty to ensure all these details are carried out. Give this completed checklist to the homeowner after installation is completed. Please contact Shady Oak Distributing with any questions, we're happy to assist over the phone during the installation process.

- 1  Install ductwork or inspect existing ductwork to ensure it complies with the ductwork do's & don'ts (opposite of this page).
- 2  Locate where the duct run exits the home. Confirm the damper on the outside of the home is opening freely while the hood is running.
- 3  Internal polymer damper(s) open and close completely and freely while the hood is in use.
- 4  Lights function on high and low settings.
- 5  Motor(s) operate properly, and motor mounting screws are secure.
- 6  Blower wheel(s) are true & not out of round, and blower wheel set screw(s) are secured.
- 7  Trim kit (Magic Lung liners) is correctly installed.
- 8  Installer investigates the cause of any questionable sounds.

### Issues not covered under warranty that need to be addressed during installation:

- The motor turns on, but is "not moving air".
- A blower wheel that isn't properly installed.
- Unidentified problems related to noise, or performance issues.
- Any ductwork/electrical issues outside of the Vent-A-Hood.